

WEEKLY NEWS



Issue: 2.4 — 17th May, 2019

AS ONE IN FAITH WE LEARN AND GROW

122 Paterson Drive, Lynbrook 3975 T 03 8773 6700 E principal@sfslynbrook.catholic.edu.au W www.sfslynbrook.catholic.edu.au

MAY

Mon 20th	Junior Excursion: Moonlight Sanctuary
Tue 21st	School Banking Day
Fri 24th	9am mConnect : Children's Party Workshop Ideas for Parents
Fri 24th	Interschool Sport
Fri 24th	Assembly @ 2.40pm
Tue 28th	School Banking Day
Tue 28th	LS2 Seniors: Mass @ 11.30am
Wed 29th	Divisional Cross Country
Fri 31st	Junior Excursion to Healesville Sanctuary
Fri 31st	Yrs 3 & 4 Badminton Yrs 5 & 6 Football Clinic
Fri 31st	P & F Morning Tea straight after Morning Gathering

JUNE

Mon 3rd	Junior Excursion to Philip Island
Tue 4th	School Banking Day
Fri 7th	St Kevin's Feast Day & Mass
Fri 7th	Assembly @ 2.40pm
Sun 9th	Mowing Roster—Team 6
Mon 10th	Queen's Birthday Public Holiday No school today
Tue 11th	School Banking Day
Fri 14th	P & F Afternoon Tea 2.45 pm—3.15pm

**TUESDAYS & THURSDAYS
SECOND LUNCH
LEGO CLUB SOCIAL SKILLS
GROUP - SEE RACHEL TO
PARTICIPATE**

CONTACT US

ST FRANCIS DE SALES

Principal - Christine White
Vice Principal - Angela Faiola
General Inquiries - 03 8773 6700
Absence Line - 03 8773 6788
E. principal@sfslynbrook.catholic.edu.au

SFS ADVISORY BOARD

Chairperson - Fiona Fowler
SFS Parents & Friends Association
President - Elena Senise
Vice President - Courtney Thursfield
Secretary - Raquel Netto & Mandy Admiraal
E. sfsfa@sfslynbrook.catholic.edu.au
SFS Maintenance Committee
Brad Jackson

ST KEVIN'S PARISH

Parish Priest: Fr Desmond Moloney
Assistant Priest: Fr Dong Tran
120 Hallam Road, Hampton Park 3976
T. 9799 2108
E. HamptonPark@cam.org.au

KHARISMA KIDS

8773 6707 0411 295 273

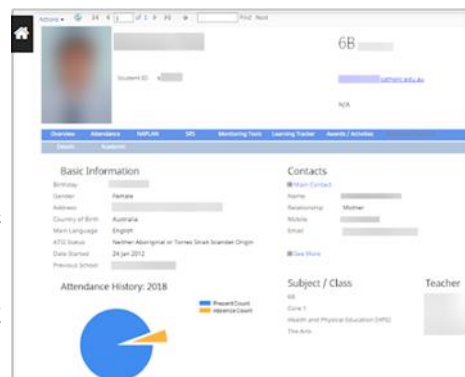
Growing Young in Christ

From the Principal

ICON

ICON stands for Integrated Catholic Online Network. It is a collaborative program of the Catholic Education Commission of Victoria (CECV) involving Victorian Catholic schools. The ICON technology platform will provide new ways of working for schools that optimise student learning and school administration. Teachers, staff, parents and students can access the ICON applications that are relevant to them through a customised portal. ICON will include three main areas:

- eAdmin
- ePlan and
- eLearn



ICON will support us with the greater complexity of compliance. As an enterprise system, ICON will enable us as a system of schools, to share resources, information and good governance practices quickly and efficiently.

Our school will transition to ICON this year. As part of moving to ICON we have elected to have a business manager which is free in the first year. We have Sally Todd working with us once a fortnight.

ICON eAdmin will provide all Catholic schools in Victoria with an integrated platform to manage human resources, finances, and student and parent information. Our admin staff will attend PD this term as we prepare to for the move to eAdmin this term. We have already started to cleanse our data ready for migration and we go live on Monday 22/7/19.

During the first week of Term 3 we will not be engaging in any financial transactions. **We ask parents to be aware of these dates.**

Cont'd next page

From the Principal

The ICON **eLEARN** and **ePLAN** areas will assist in the areas of learning and teaching.

- ◆ **ePlan** allows teachers and school leaders to view, analyse and compare historical and current student data such as attendance records, NAPLAN results and teacher judgments against curriculum standards.
- ◆ ICON **eLearn** Modules in eSIS will provide school staff with functionality related to school timetables, attendance, assessment and reporting and pastoral care information.
- ◆ The **Community Portal** is a web-based portal that allows parents and other community members to view and update information that is relevant to them - *My Details, Excursions, Parent/Teacher Interviews, Finance, Student Results*.

We will begin PD on these aspect this year and will have access to view these modules and consider their benefits to our school. Many tasks that are currently done through additional 3rd party apps e.g booking interviews can be achieved via ICON. We will begin the process of review to determine the best options for our school and a timeline for the implementation of the various components of ICON.

During Semester two we ask parents for their support and patience, as our admin team build their expertise with the new platform. Once we make the adjustments the new system will provide many benefits and save time with increased efficiency in our processes and procedures.

Addressing a Parent Issue



Thank you to the parents who have brought to my attention that they have problems with access to the school office from 2:30- 3pm each afternoon. The pedestrian gates are locked around the school as a safety measure and to minimise entry points to the school. Each afternoon staff of Kharisma Kids lock the carpark entry for cars so that we do not have cars queue too early in the street and blocking local traffic. However we have not been opening the side pedestrian gate so that pedestrian traffic can enter the school to access the front office, causing frustration for parents. We apologise for this inconvenience and have put in measures to immediately rectify this issue for parents. We have two strategies in place, firstly I have asked Kharisma Kids to open the pedestrian access when they lock the carpark entry for cars each afternoon. Secondly Lorenza who has been opening the gate at 3pm will schedule the opening at 2:30 each afternoon.

Again thanks to the parents who have brought this to my attention. When there is an issue it is good to be able to discuss the issue. Often there are many factors that result in certain procedures to be in place. It is always constructive to discuss these, understand each other's perspectives and where possible revise our protocols/ strategies or policies. Together we can work in partnership for the best outcomes for our school and the safety and wellbeing of our children and community.

NAPLAN

Congratulations to our Year 3 and Year 5 students who completed the NAPLAN assessments this week. All our children did their best which is all we expect. The results give a snap shot of their learning in these testable items and along with other data will inform their next learning goals across the curriculum.

Christine White
Principal

HERPANGINA AND HAND FOOT MOUTH DISEASE

We have had a reported case of Herpangina in the Junior School.

Herpangina is a viral infection caused by a member of the Coxsackievirus family and most often affects young children.

Affected children usually develop a high fever and complain of a sore throat. They then develop blisters or ulcers at the back of the throat and palate. Younger children may refuse to eat or drink because of the pain and are at risk for developing signs and symptoms of dehydration.

The virus is usually spread via the fecal-oral route (contamination of hands and other surfaces with fecal matter) or via respiratory route (air droplets from coughing or sneezing).

The virus is contagious and can easily pass from child to child through contaminated surfaces, unwashed hands, and through sneezing and coughing. Typically, people infected with the virus are most contagious during the first week of illness.

Signs and symptoms are usually:

- Fever
- Sore throat
- Small blisters and ulcers may cover the soft palate, uvula, tonsils and posterior pharynx.
- Enlarged lymph nodes along the neck
- Rash may or may not be present.

What is the difference between Herpangina and Hand, Foot and Mouth disease (HFM)?

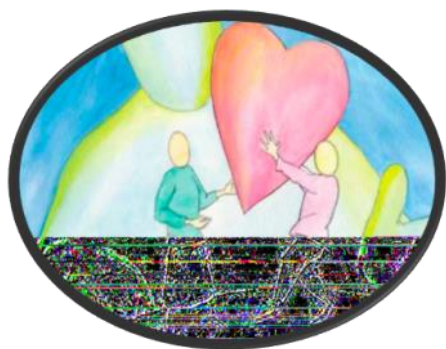
They are both caused by the same virus. The locations of the blisters differ with HFM lesions occurring at the front of the mouth and Herpangina lesions occurring at the back of the mouth. 75% of children with HFM also develop skin lesions on the palms and soles but children with Herpangina rarely develop any typical rashes.

Good hygiene (frequent hand washing with soap and water) is suggested for prevention.



Education in faith

Encompassing: Prayer, Liturgy, Sacraments, Icons/Symbols



***‘I give you a new commandment:
love one another’.***

John 13: 31–35

While Jesus was with his disciples at the Last Supper, he pointed toward his future glory following his death and resurrection where he would be reunited with his Father in heaven. He also gave the disciples a command: to love one another. But the disciples didn't have to figure out how to do this on their own. Jesus told them to love one another in the same way he had loved them.

Jesus wanted the disciples to love one another and all followers with a binding love. It is this same kind of love that binds families together. When other people turn their backs and walk away, it is symbolic of Jesus' love that families are bound by a love incomparable anywhere else in our own experience. We fail at times, but rarely in any other setting do we see anything close to the unconditional love God has for us, as we see in the love parents show their children.

Find someone in your neighborhood, school, place of work, or within your family who sometimes feels left out. Reach out to that person with the kind of love Jesus describes in this Gospel. Make them feel welcome and know they are a child of God. Perhaps you will send them a greeting card, say a special prayer for them, visit them, or invite them to your home. When your action is complete, share with one another where you saw Jesus in the experience you had with the person.

Prayerfully Yours!

Elisabetta Micallef
Religious Education Coordinator (REC)
emicallef@sfslynbrook.catholic.edu.au

Learning Space Liturgies

Each Mass will be held in the Community Room. Hope to see you there!

Tuesday 28th May	LS2 – Seniors (CC, AG, CW) at 11.30am.
Wednesday 12th June	LS1 – Seniors (RA, AP, MF) at 11.30am.
Tuesday 18th June	LS3 – Seniors (SD, MB, AG) at 11.30am.

PROJECT COMPASSION BOXES

Please return all Project Compassion boxes to the front office by Friday 24th May.



***“A kind gesture can
reach a wound that only
compassion can heal.”***

STEVE MARABOLI



Solemnity of Our Lady, Help of Christians

Friday 24 May

On Friday 24th May, the Church in Australia celebrates the Solemnity of Mary Help of Christians. Mary Help of Christians was adopted as patron of the new Church of Australia in 1844, at a significant time in our history.

As Mother of God's children, Mary has responded by helping Christians throughout the ages. She has done this by coming to the aid of individuals, families, towns, kingdoms and nations.

Perhaps as a family, you could take a virtual visit to the chapel of Our Lady, Help of Christians at the Basilica of the National Shrine of the Immaculate Conception. This is a great way for the children to see and understand how significant this day is.



Year 5 / 6 Social Justice Action Team



As we establish our Mini Vinnies Social Justice Action Team, the students are learning about the St Vincent de Paul Society which they will be a part of.

On Monday, Cheyne from the Box Hill Head Office came to share the history of the St Vincent de Paul Society, the meaning of the logo and finally what being a Mini Vinnie means. The students were fantastic, asking lots of questions and engaging with Cheyne.

Next Monday, May 20th, we are very fortunate to have some of the Year 10's and 11's from St John's Regional College coming to SFS to work with our Mini Vinnies. The St. John's students are involved in the Catholic

School's Youth Ministry Australia (CSYMA) and will be working with our Mini Vinnies to assist them in some of their actions.

Then on Monday May 27th, Margaret and Joan from the Hampton Park Conference based at St Kevin's will be coming to explain the work that they are involved with within our Parish to assist those less fortunate who are in need.

Then finally on June 17th the Casey Youth Vinnies will be coming to explain how they assist those in need within our parish and running some activities with our Mini Vinnies.

I hope that after these informative sessions the Mini Vinnies will get a real sense of the St Vincent de Paul Society and the work that they do so that they, as Mini Vinnies, can begin to form actions that will add to the work of the Society.

Giuliana



Student Well-Being

Encompassing: Student Engagement, Student Connectedness, Classroom Climate, Inclusion and Prevention to Intervention.

mConnect Parent Group

Our next parent group (run through Wellsprings for Women) will meet next **Friday 24th May from 9am until 10.30am** in the staffroom. The focus for the day will be on cake decorating and party planning. All parents are welcome to attend, but we need to know numbers for planning purposes. If you would like to attend, please let the office know or email me rlen-ko@sfslynbrook.catholic.edu.au



BeYou

At SFS, we value the mental health of the whole school community, students, teachers, parents and carers. Be-You is a framework that helps with positive mental health promotion and education. This week's fact sheet is all about children's brain development.



Healthy brain development

This depends on several factors, including the quality and reliability of relationships that children and young people have within and outside the family.

Warm, responsive and trusting relationships provide optimal conditions for children and young people to learn and make sense of the world around them.

As an educator, you have an important role in supporting children and young people to develop in ways that ensure good health, wellbeing and success throughout their childhood, adolescence and into the future.

About brain architecture

Foundation for learning

The brain's structure (or architecture), provides the foundation for children and young people's learning. Brain development occurs sequentially, with lower and more primitive areas developing first (that is, those parts of the brain that regulate body functions such as breathing, heart rate and temperature). The prefrontal cortex is the last area of the brain to mature, in adulthood. This controls higher-order or 'executive' functioning.

A baby is born with billions of brain cells called neurons. The first 18-24 months of life see a tremendous growth in neural connections. These connections form pathways of communication between neurons which direct all our functions and behaviours.

Brain development is influenced by genes and the environment

While our genes determine the formation of neural connections, the connections are reinforced by experiences in the child or young person's environment. Connections that are stimulated through experiences are strengthened, while those that aren't are lost. Only connections needed for the person's environment are retained on the principle of 'use it or lose it.'

This process of forming and pruning connections continues into adulthood. The billions of connections that result from this process influence children and young people's future health, wellbeing, learning and behaviour.

Student Well-Being

Encompassing: Student Engagement, Student Connectedness, Classroom Climate, Inclusion and Prevention to Intervention.



Twilight community market

Our annual community Twilight market will be happening on

Thursday 7th November 2019
from 5pm until 8pm.

Please make sure you mark the date in your diary and let all your family and friends know. Let's make it the most successful market. I am currently organising donations from local businesses to be used at a silent auction on the night.

If you would like to donate a prize or you have any connections with local businesses, please let me know. Any help and support would be much appreciated.

Lego club social skills group

We run a lego social skills group on Tuesday and Thursday during the second lunch break.

This group is to help children who might find lunch times difficult, lack confidence in joining in with others or who would benefit from practicing their social skills and developing positive play strategies.



Rachel Lenko
Student Wellbeing Leader
rlenko@sfslynbrook.catholic.edu.au

Student Well-Being

Encompassing: Student Engagement, Student Connectedness, Classroom Climate, Inclusion and Prevention to Intervention.



CHILDREN'S PARTY* WORKSHOP



mCONNECT at SFS- Matters Uniting Mums

- Learn some handy tips
- Practice some fun cake techniques
- Share and discuss what works (and what doesn't)
- Ask questions
- Meet some other parents
- HAVE FUN!

Friday
May 24th
9:00am -
10:30am
at SFS School

****Please RSVP****



Office News

FEES:

A reminder that there are still a few families that have outstanding school fees. If you do not have a direct debit arrangement in place the first term fees were due on 1st March. The second instalment for fees will be due by 7th June and the third instalment will be due on 6th September. If you are experiencing financial difficulty, please make an appointment to see Christine to discuss. Swimming fees will be added to your family account later in the year.

MOWING ROSTER Team 6	Sunday 9th June	9am—11am (Queen's b'day long weekend)
Nitharshan Gunaretnam	Mandy Admiraal	Clifford Karghoo
Mahesh Balakrishnan	Diego Silva Acevedo	Shaun Witherden
Sharon Perera	Ashley Vella	Melissa Turner
Janath Nissanka	Sanal Elemban	Mark Harrison
Jason McGrath		

HERE ARE THE DATES FOR THE REST OF THE 2019/2020 ROSTER.

IF YOUR DATE WAS CANCELLED OR YOU COULD NOT ATTEND YOUR ROSTERED DATE—PLEASE FEEL FREE TO JOIN ANY OF THESE DATES.

REMEMBER TO SIGN THE ATTENDANCE SHEET ON THE DAY

June	9am—11am	Sunday 9th	Queen's Birthday long weekend
July	9am—11am	Saturday 20th	
August	1pm—3pm	Sunday 11th	
Sept	9am—11am	Saturday 14th	
Oct	9am—11am	Sunday 6th	Day light savings begins
	Working Bee # 2	Saturday 19th	9am—12noon
Nov	1pm—3pm	Saturday 2nd	Melbourne Cup long weekend
	1pm—3pm	Sunday 17th	
Dec	9am—11am	Sunday 1st	
	9am—11am	Saturday 14th	
Jan 2020	9am—11am	Saturday 18th	Term holiday
Feb 2020	1pm—3pm	Sunday 2nd	
	9am—11am	Saturday 15th	

Office News

BEFORE AND AFTER SCHOOL CARE



If you are needing Before and After School Care on a casual basis, please note that we are almost full for After School Care.

You will need to book, in advance, to ensure you can get a place. Please call and leave a message or send us a text on our Booking Number :

0411 295 273



Before School Care—we have brought back toast for breakfast, but you will need to be here by 7.50am as we pack up the Breakfast Trolley by 8am.

Vacation Care—We will be offering Vacation Care for the Winter Holidays. We do require a minimum number to run. We have had quite a few parents asking for this service. Please support the program if you wish it to become a regular operating service. The Vacation Care Program will be out next week in the Newsletter and available to view at the Service in Learning Space 1.

Rob, Lucas, Laura, Marlene

CSEF - Camp, Sports and Excursion Fund Do you have one of these cards?



If you do, you may be eligible for \$125 for each of your children from the government to go towards your camp fees, swimming fees or excursion fees.

It's easy—just fill out the CSEF form available from the school office and present your current Centrelink Health Care Card or Pensioner Concession Card and we will do the rest for you.

Applications should be completed and lodged with us as soon as possible before June 21st.

This allowance is paid to the school to use towards expenses relating to camps, excursions or sporting activities for the benefit of your child.



NCCD Information Sheet for Parents, Carers and Guardians

Nationally Consistent Collection of Data (NCCD) On School Students with Disability

What is the Nationally Consistent Collection of Data?

Schools must now complete the *Nationally Consistent Collection of Data on School Students with Disability (NCCD)* every year. It counts the number of students who receive additional adjustments or “help” at school because of a disability. The NCCD helps governments plan for the needs of students with disability.

Who is counted in the data collection?

To count a student in the NCCD, schools must think through some key questions:

1. Is the student getting help at school so that they can take part in education on the same basis as other students?
2. Is the help given because of a disability? The word ‘disability’ comes from the [Disability Discrimination Act 1992](#) (DDA) and it can include many students.
3. Has the school talked to you or your child about the help that they provide?
4. Has the school kept records about the help they provide, the student needs and the reasons that the student needs this help? The school will need to keep copies of tests, student work, assessments, records of meetings, medical reports or other paperwork and information about how the student’s learning is moving along over time.

Once the school decides that the student should be counted in the NCCD, they then choose a disability group and one of four levels of help that has been given to the student.

What does the word ‘disability’ mean in the NCCD?

In the NCCD the word ‘disability’ comes from the [Disability Discrimination Act 1992](#) (DDA). There are four types of disability that the school can choose from: sensory, cognitive, social-emotional and physical.

Many students that need help at school can be counted in the NCCD. For example, students with learning problems, e.g. specific learning disability or reading difficulty (sometimes called dyslexia), health problems (e.g. epilepsy or diabetes), physical disability (e.g. cerebral palsy), vision/hearing loss and social-emotional problems (e.g. selective mutism, Autism Spectrum Disorder, anxiety).

Letters from doctors or specialists can be very helpful for schools as they plan how to support students with their learning. Schools do not need to have these letters before they can count a

student in NCCD. Teachers can use all that they know about the student's learning and the records that they have collected over time to decide if a student can be counted in the NCCD.

What sort of help does the school give students?

Students need different types of help at school. Some students need a little help sometimes while other students need a lot of help nearly all the time. The type of help given depends on the needs of the student. The help can include changes to the school buildings or grounds (e.g. ramps or things like special desks or chairs), extra teacher help in classes, special learning programs, changes to the work they give the student or extra adult help.

How will the NCCD be different this year?

All schools have been counting students in the NCCD since 2015. The government will use the NCCD data as part of the funding to schools.

What will the school need to know about my child for the NCCD?

Schools work together with families to understand the needs of each child. It is helpful if families give their child's teacher a copy of any letters or reports they have. The letters or reports will help the school understand the child and the help that they might need. Letters from doctors, psychologists, speech pathologists, doctor, and occupational therapists etc. can be very helpful for schools. These reports along with information that the teacher has (i.e. school based tests, your child's work and learning plans) helps the school to understand and meet your child's needs.

What happens to the NCCD data? Who will have the NCCD information?

Each school principal must check the NCCD data in August of each year. The school will give the information to the Catholic Education Office. The school will work with the Catholic Education Office to make sure that the NCCD data is OK before they give the data to the government. The government will not be given the names of any students or any letters or records. Please ask your school for their privacy policy if you need to know more.

Does the school need me to agree with them about counting my child in the NCCD?

Amendments were made to the [Australian Education Act 2013](#) and [Australian Education Regulation 2013](#). Schools do not need you to agree to let them count a child in the NCCD. You cannot ask the school not to count your child.

Where can I find out more?

Please contact your child's school if you have further questions about the NCCD and/or refer to the national [NCCD Portal](#).

Parents and Friends Association

sfspfa@sfslynbrook.catholic.edu.au
pfvicepresident@sfslynbrook.catholic.edu.au
pfasecretary@sfslynbrook.catholic.edu.au



Election Day

Sausage Sizzle 11am—2pm

Please come down to SFS to vote on **Saturday May 18th**. Voting is open all day, however the P&F will be hosting a democracy sausage sizzle **between 11am-2pm** – so if you can do pop down to vote between those times. All funds raised will help the school and students. Cash only - so please bring enough spare change to buy you and your family a snag and drink. Sausages \$2 and are drinks \$2.

**VOTE 1
SAUSAGE**



Not only will the lovely P&F committee be there cooking up a storm, some of the wonderful teachers from SFS will also be there to help serve. We all need to vote, so please choose to vote at SFS and enjoy a democracy sausage – it is a voting day tradition. Whilst helping us raise funds to support the Junior and Senior School Productions. We encourage everyone to come down and support the school!



Monash Children's Hospital Donation

As you may know the money raised from the Easter Raffle and Hot Cross Bun Day was collected to be donated to the Monash Children's Hospital.

Three lovely students from SFS attended the hospital to present the giant cheque. Gianna (LS2), Davide (LS3) & Elysian (LS3) arrived at the hospital, dressed in their winter uniform, and presented Melissa (the Head of the Health Foundation Department at MCH) with a giant cheque for \$805.

Thank you to everyone who participated in the raffles (donating prizes and buying / selling tickets) as always your generosity was greatly received. As a school community, we should feel very proud of our donation to a very worthwhile cause.

Parents and Friends Association

sfspfa@sfslynbrook.catholic.edu.au
pfvicepresident@sfslynbrook.catholic.edu.au
pfasecretary@sfslynbrook.catholic.edu.au



Mother's Day Celebrations

We hope everyone had a great Mother's Day on Sunday. The morning tea and gift stall the P&F ran on Friday last week were both a huge success. The morning tea was filled with tables of delicious treats and all those who attended enjoyed catching up with one another. The Mother's Day gift stall was stocked with awesome presents and the students really enjoyed hand picking special gifts. A HUGE thank you to all those who helped on the day. Without you these events would not be possible. Likewise a heartfelt thank you to everyone who donated prizes for the raffles and congratulations to all those who won.



A special shout out to Domino's Pizza Marriott Waters – they continue to support the school with their generous donations. Friday night is the perfect night for pizza, so pop down to Marriott Waters Domino store and treat the family to some delicious pizza.



Parents and Friends Association

sfspfa@sfslynbrook.catholic.edu.au
pfavicepresident@sfslynbrook.catholic.edu.au
pfasecretary@sfslynbrook.catholic.edu.au



School Disco

Save the date for the annual school disco which will be on Friday 7th June. The P&F will be sending home fliers which will be sent home shortly with further details?

Entry will be \$2 per child and students will get a glow stick, packet of chips and a Freddo frog. Following on from the success of last year's disco, we are excited to welcome back 'Little and Trivial Events' to host the disco. The disco is open to current SFS students only (no siblings sorry). We will be holding two separate discos - 1 for juniors and seniors. More information to follow. We will need parent helpers to ensure the disco is a success so please return the parent helper slip which will be sent home shortly.

Afternoon Tea

The P&F would like to invite everyone to come along and join others from our schooling community for our next afternoon tea on **Friday 31st May**. These events are a great way to catch up with other parents / grandparents / guardians from the schooling community whilst enjoying some tasty treats.



SECOND HAND UNIFORM SHOP

The cooler weather is definitely upon us. And it is the perfect time to go through the kid's old school uniforms and donate everything that no longer fits them. All items are sold at the very reasonable rate of \$5 per item and will provide warmth to another child. For those wanting to purchase second hand uniforms please come down to the next uniform shop on **Friday 31st May** which will be open during the Afternoon Tea.

Parents and Friends Association

sfspfa@sfslynbrook.catholic.edu.au
pfavicepresident@sfslynbrook.catholic.edu.au
pfasecretary@sfslynbrook.catholic.edu.au



SFS is doing Woolworths “Earn & Learn”

If you, (or anyone you know!!), shops at Woolworths please collect the “Earn & Learn” stickers for us as SFS is participating in the program.

The stickers can be handed in with your child at school or straight to the office, and we also have a box set up at Marriott Waters!! Making it nice and easy to drop off your stickers.



Popcorn & Chip Fridays

There will be Smith's plain potato chips and popcorn available for purchase each Friday during Term 2. They will be \$0.50 each. So don't forget to give your child / children money on Fridays if you would like to then enjoy these tasty treats.



New Vice President

The P&F would like to welcome Courtney Thursfield as the new VP. She has very generously put up her hand to help out the committee. She will strengthen the team and add a lot of value and support to the P&F and the schooling community. We are very excited to have her on board in this role.

IMPORTANT DATES

Every Friday	Popcorn & Chip day
Sat 18 th May	Election Day Sausage Sizzle
Fri 31 st May	Second Hand Uniform Shop
Fri 31 st May	Afternoon tea
Fri 7 th June	School Disco
Fri 14 th June	Red Rooster Fun Lunch



Parents and Friends Association

[sfspa@sfslynbrook.catholic.edu.au](mailto:sfspfa@sfslynbrook.catholic.edu.au)
pfavicepresident@sfslynbrook.catholic.edu.au
pfasecretary@sfslynbrook.catholic.edu.au



Give mum the VIP treatment with Entertainment!

Packed with thousands of valuable offers across dining, retail, attractions and travel, an Entertainment Membership is the gift she can enjoy all year round.

[CLICK HERE TO SUPPORT US NOW](#)

Support St Francis de Sales Lynbrook

Get your new Entertainment membership today

The new Entertainment Membership is here,
packed with amazing offers, including family activities, casual dining and tasty treats.
So who wants ice cream?

Purchase your 2019/2020 Entertainment membership today

Books available from the School Office - \$ 70